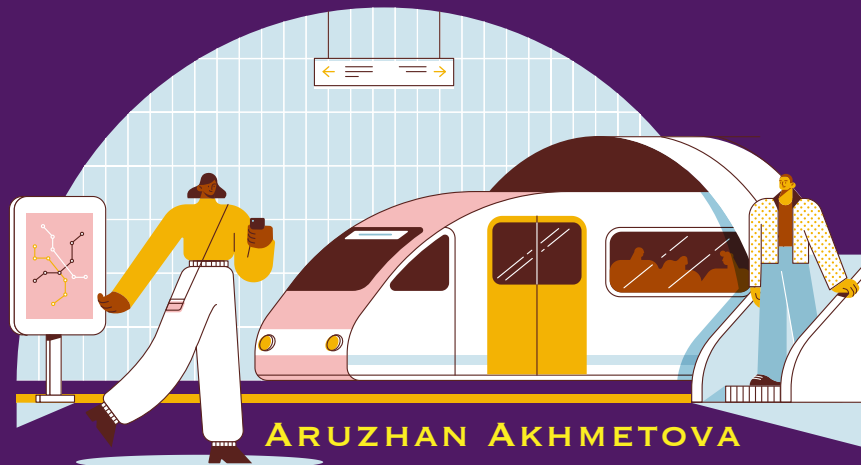




ACCESS MICROSCOLARSHIP
PROGRAMS

TRANSPORT

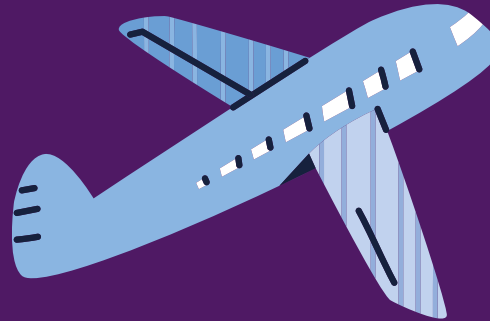


TODAY'S CLASS

ACTIVITIES AND MORE!

WHAT DID WE KNOW ?

WHAT WILL WE KNOW?



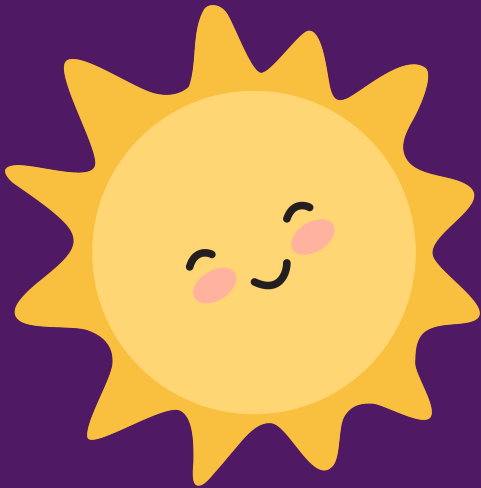
**GUYS WHAT DO YOU KNOW
ABOUT TRANSPORT, LETS
DISCUSS RIGHT NOW**

I WANT TO SHOW YOU SOME
PICTURES ABOUT TRANSPORT

YOU HAVE TO GUESS

IT IS EASY

AND INTERESTING

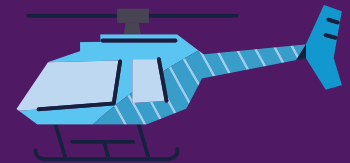


TRANSPORT





TRANSPORT (IN BRITISH ENGLISH), OR TRANSPORTATION (IN AMERICAN ENGLISH), IS THE INTENTIONAL MOVEMENT OF HUMANS, ANIMALS, AND GOODS FROM ONE LOCATION TO ANOTHER





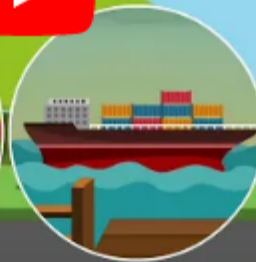



MEANS OF TRANSPORT ARE ANY OF THE DIFFERENT KINDS OF TRANSPORT FACILITIES USED TO CARRY PEOPLE OR CARGO

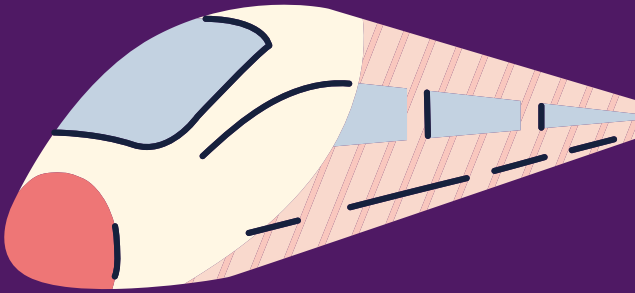




Mode of transport for kids || types of transport...



Watch on  YouTube



A MODE OF TRANSPORT IS A SOLUTION THAT MAKES USE OF A CERTAIN TYPE OF VEHICLE, INFRASTRUCTURE, AND OPERATION





EACH MODE HAS ITS OWN
ADVANTAGES AND
DISADVANTAGES, AND WILL BE
CHOSEN ON THE BASIS OF
COST, CAPABILITY, AND ROUTE





GOVERNMENTS DEAL WITH THE WAY THE VEHICLES ARE OPERATED, AND THE PROCEDURES SET FOR THIS PURPOSE, INCLUDING FINANCING



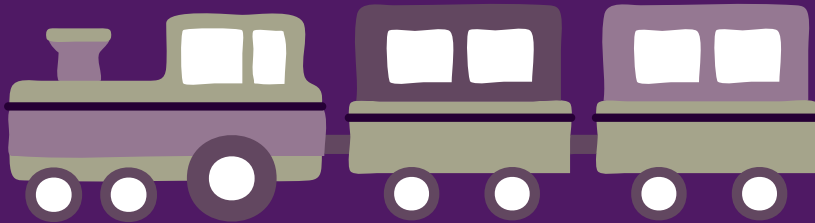
**PASSENGER TRANSPORT MAY BE PUBLIC,
WHERE OPERATORS PROVIDE SCHEDULED
SERVICES, OR PRIVATE**



YEAH IT IS REALLY



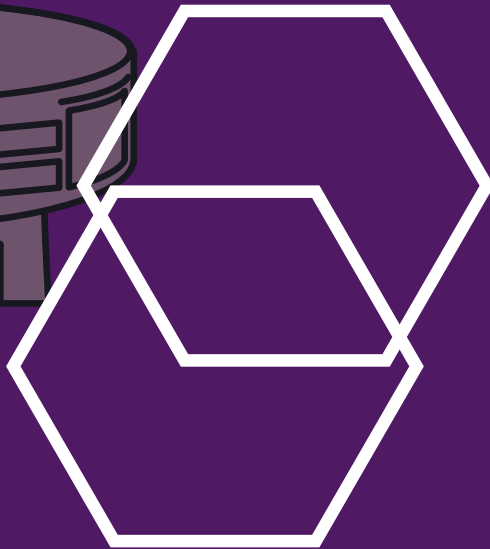
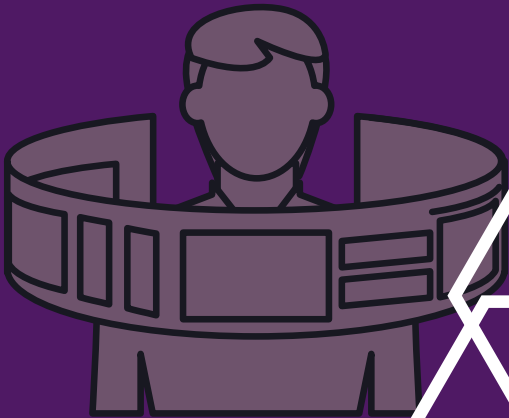
**TRANSPORT PLAYS AN IMPORTANT PART
IN ECONOMIC GROWTH AND
GLOBALIZATION.**



HTTPS://YOUTU.BE/CUS2W4Y2QJ4

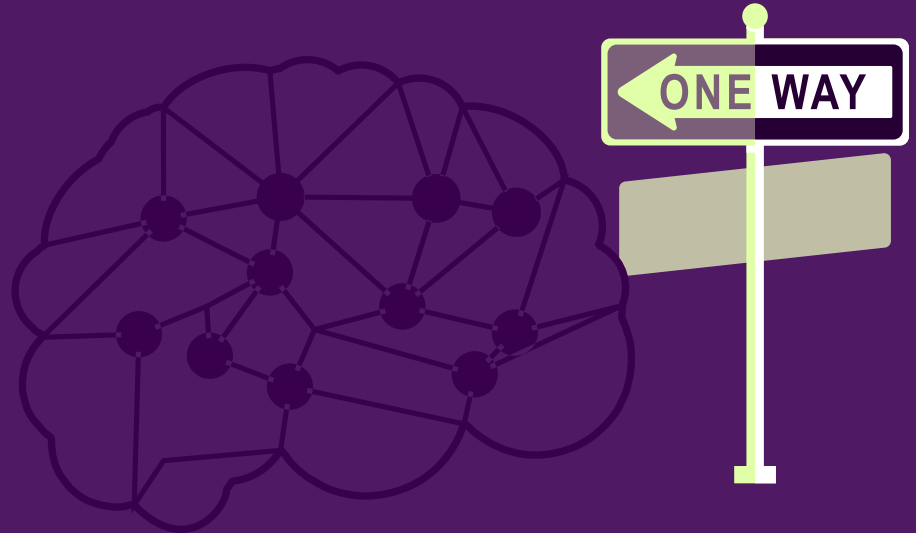
SOMETHING INTERESTING HERE

MODERN TECHNOLOGY HAS ALLOWED MACHINES TO ENHANCE HUMAN POWER





**ALTHOUGH HUMANS ARE ABLE TO WALK
WITHOUT INFRASTRUCTURE, THE
TRANSPORT CAN BE ENHANCED THROUGH
THE USE OF ROADS**



**HUMAN-POWERED TRANSPORT REMAINS POPULAR
FOR REASONS OF COST-SAVING**

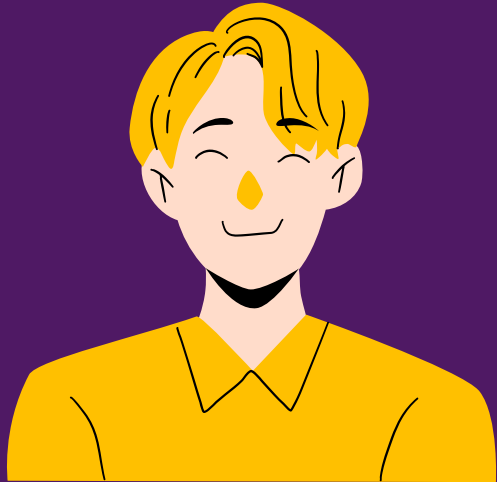
AIR

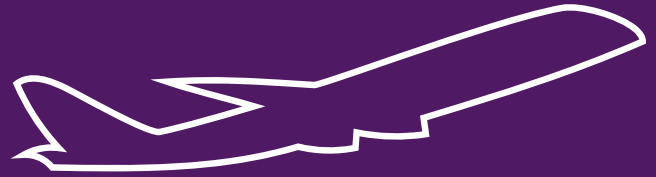


A FIXED-WING AIRCRAFT, COMMONLY CALLED AN AIRPLANE, IS A HEAVIER-THAN-AIR CRAFT



A GYROPLANE IS BOTH FIXED-WING
AND ROTARY WING.





***TWO THINGS NECESSARY FOR
AIRCRAFT ARE AIR FLOW OVER
THE WINGS FOR LIFT AND AN
AREA FOR LANDING***

**IS IT REALLY
INTERESTING FOR
YOU ?**

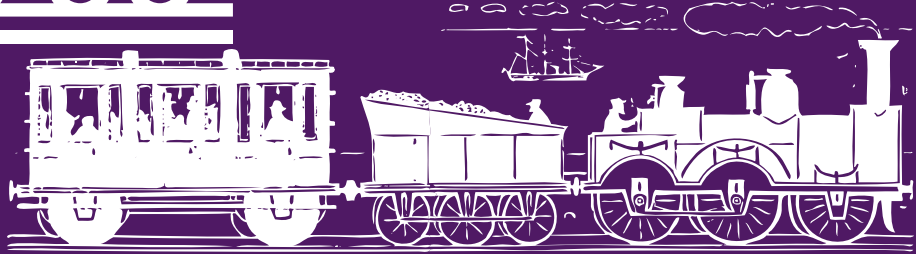


LETS CONTINUE



[HTTPS://YOUTU.BE/JY88EJZRPWW](https://youtu.be/JY88EJZRPWW)

RAIL



RAIL TRANSPORT IS WHERE A TRAIN
RUNS ALONG A SET OF TWO
PARALLEL STEEL RAILS



ART MATERIALS

ADD ON



[HTTPS://YOUTU.BE/RLIY_YYLDJQ](https://youtu.be/RLIY_YYLDJQ)

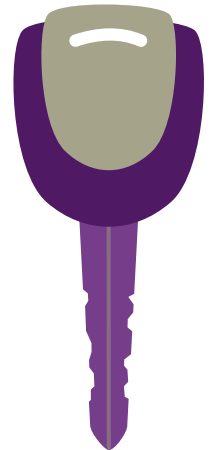
ROAD



A ROAD IS AN IDENTIFIABLE ROUTE,
WAY, OR PATH BETWEEN TWO OR MORE
PLACES



THE MOST COMMON ROAD VEHICLE IS THE AUTOMOBILE



**AUTOMOBILES
PROVIDE HIGH
FLEXIBILITY WITH
LOW CAPACITY, BUT
HIGH ENERGY**

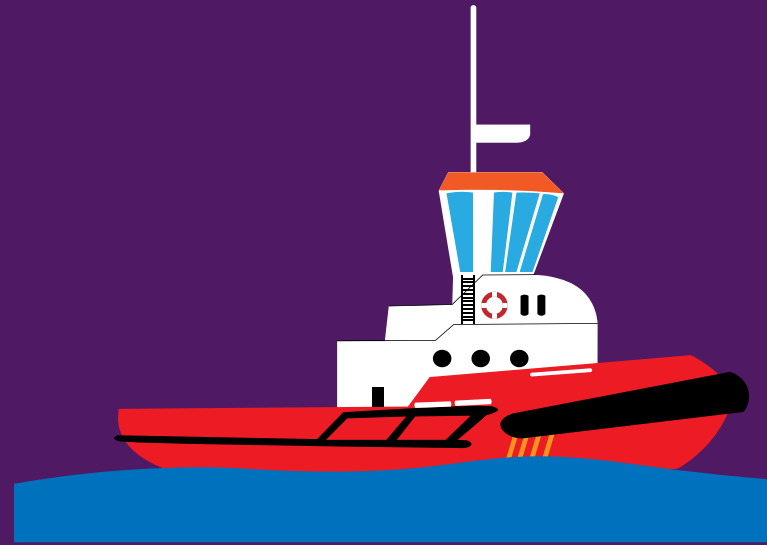


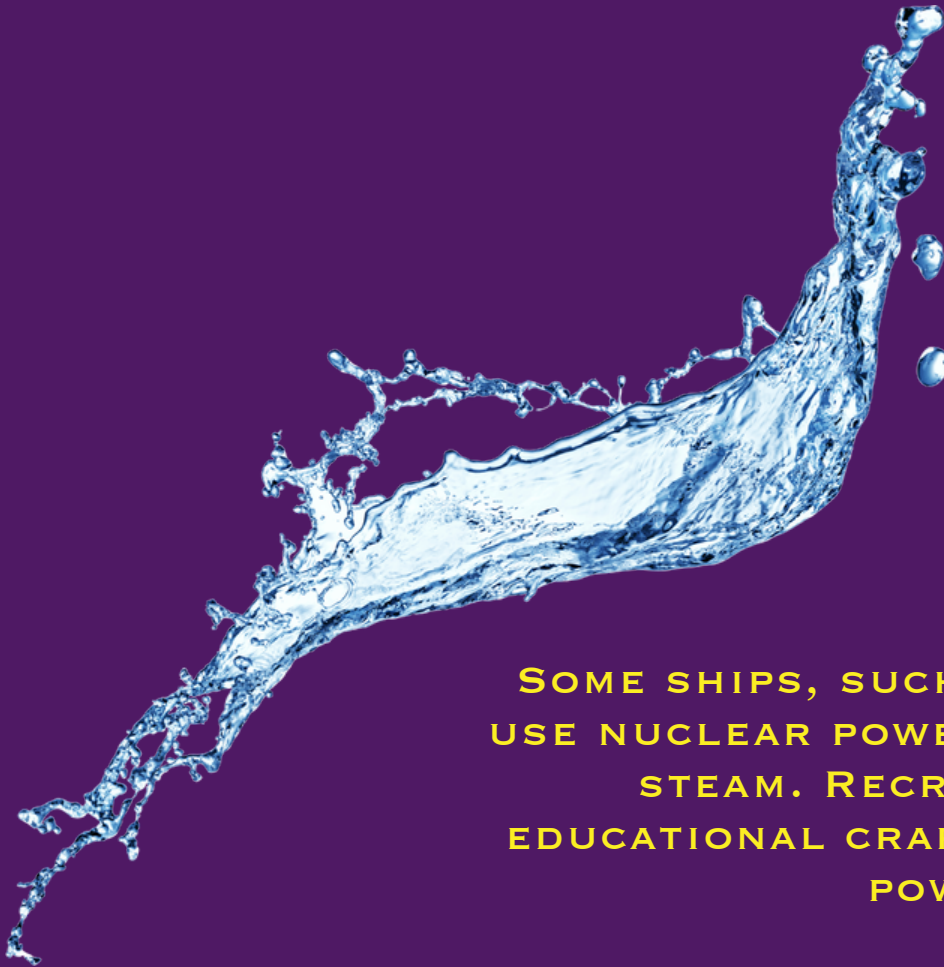
WATER

WATER TRANSPORT IS MOVEMENT BY MEANS OF A WATERCRAFT—SUCH AS A BARGE, BOAT, SHIP, OR SAILBOAT—OVER A BODY OF WATER, SUCH AS A SEA, OCEAN, LAKE, CANAL, OR RIVER.



IN THE 19TH CENTURY, THE FIRST STEAM SHIPS WERE DEVELOPED, USING A STEAM ENGINE TO DRIVE A PADDLE WHEEL OR PROPELLER TO MOVE THE SHIP





**SOME SHIPS, SUCH AS SUBMARINES,
USE NUCLEAR POWER TO PRODUCE THE
STEAM. RECREATIONAL OR
EDUCATIONAL CRAFT STILL USE WIND
POWER**



ALWAYS KEEP IN MIND

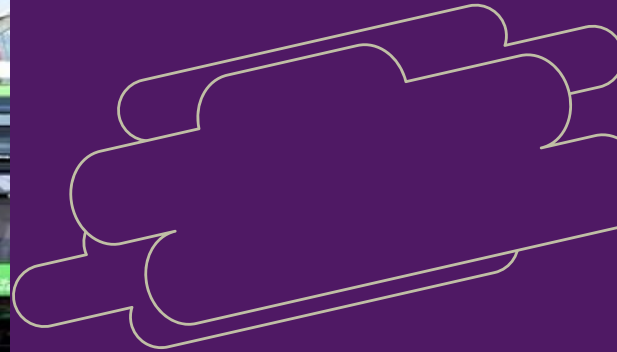
DO YOU LIKE IT?

TOGETER, TOGETHER

YEAH! COME ON!!!!!!



CABLE TRANSPORT IS A BROAD MODE WHERE VEHICLES ARE PULLED BY CABLES INSTEAD OF AN INTERNAL POWER SOURCE.





**INFRASTRUCTURE IS THE FIXED INSTALLATIONS
THAT ALLOW A VEHICLE TO OPERATE**

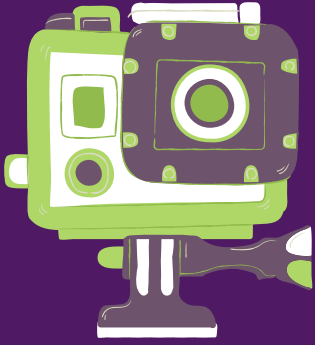


**IS IT NOT DIFFICULT?
THEN, WE CLAP, YEAAAH**

A VEHICLE IS A NON-LIVING DEVICE THAT IS USED TO MOVE PEOPLE AND GOODS. UNLIKE THE INFRASTRUCTURE, THE VEHICLE MOVES ALONG WITH THE CARGO AND RIDERS

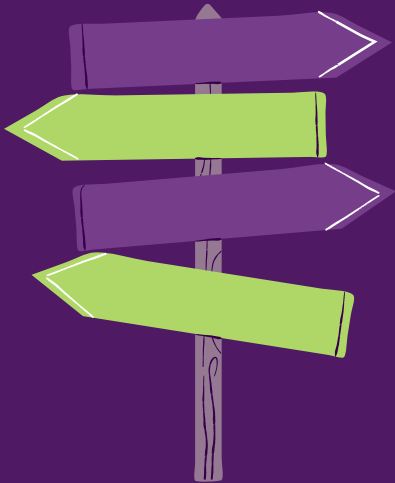


OPERATION
TILTED AERIAL VIEW OF MODERN AIRPORT.



INCHEON INTERNATIONAL AIRPORT, SOUTH KOREA

PASSENGER TRANSPORT, OR TRAVEL, IS DIVIDED INTO PUBLIC AND PRIVATE TRANSPORT. PUBLIC TRANSPORT IS SCHEDULED SERVICES ON FIXED ROUTES, WHILE PRIVATE IS VEHICLES THAT PROVIDE AD HOC SERVICES AT THE RIDERS DESIRE.



WHY DO YOU LIKE TRANSPORT?

LET'S SHARE STORIES
WITH THE CLASS



FREIGHT TRANSPORT, OR
SHIPPING, IS A KEY IN THE
VALUE CHAIN IN
MANUFACTURING



CONTAINERIZATION, WITH THE STANDARDIZATION OF ISO CONTAINERS ON ALL VEHICLES AND AT ALL PORTS, HAS REVOLUTIONIZED INTERNATIONAL



TED
Ed

How containerization shaped the modern world



HOW CONTAINERIZATION SHAPED THE MODERN WORLD



Watch on  YouTube

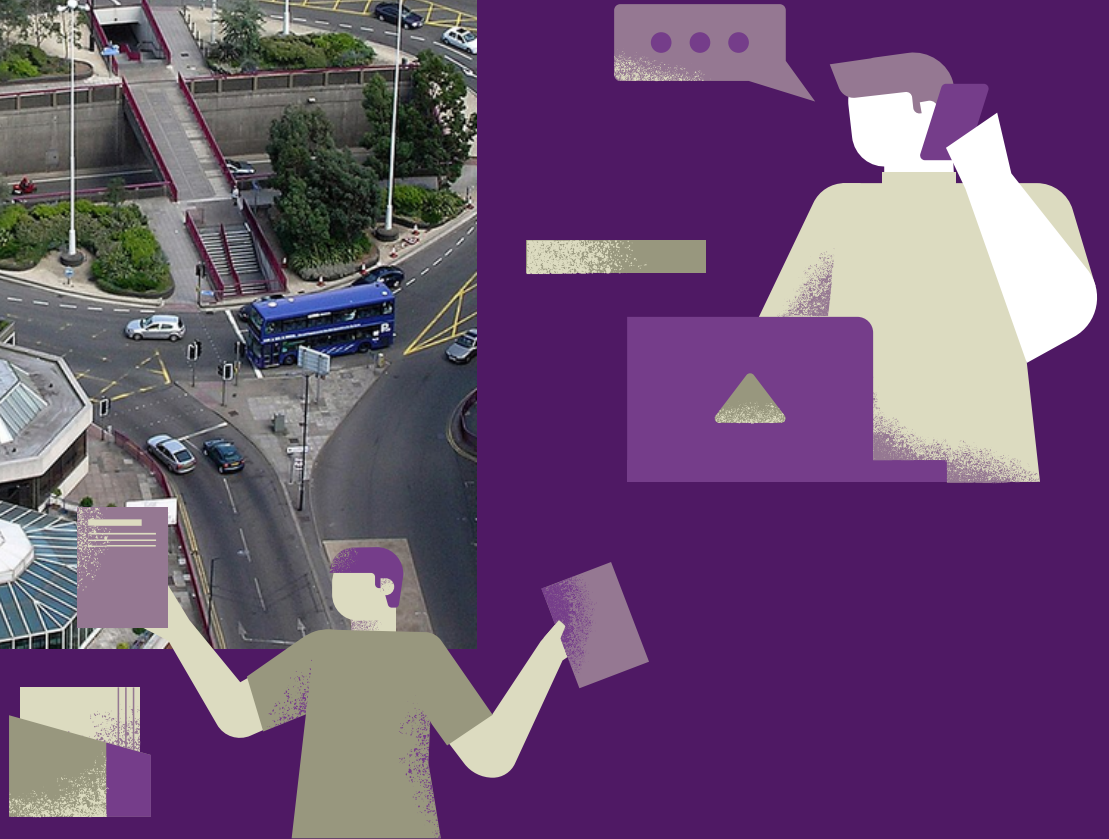


TRANSPORT IS A KEY NECESSITY FOR SPECIALIZATION—ALLOWING PRODUCTION AND CONSUMPTION OF PRODUCTS TO OCCUR AT DIFFERENT LOCATIONS.



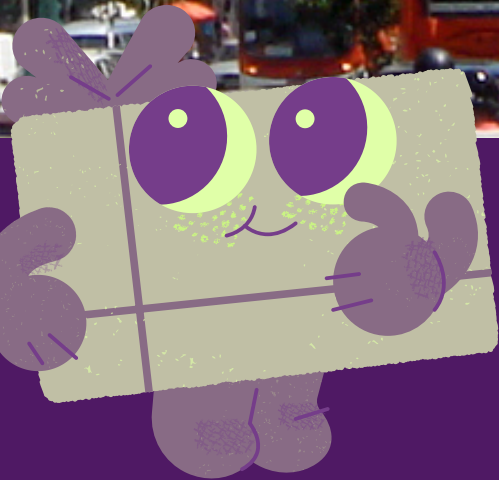


**TRANSPORT PLANNING ALLOWS
FOR HIGH UTILIZATION AND LESS
IMPACT REGARDING NEW
INFRASTRUCTURE.**



SUSTAINABLE DEVELOPMENT

THE UNITED NATIONS FIRST FORMALLY RECOGNIZED THE ROLE OF TRANSPORT IN SUSTAINABLE DEVELOPMENT IN THE 1992 UNITED NATIONS EARTH SUMMIT



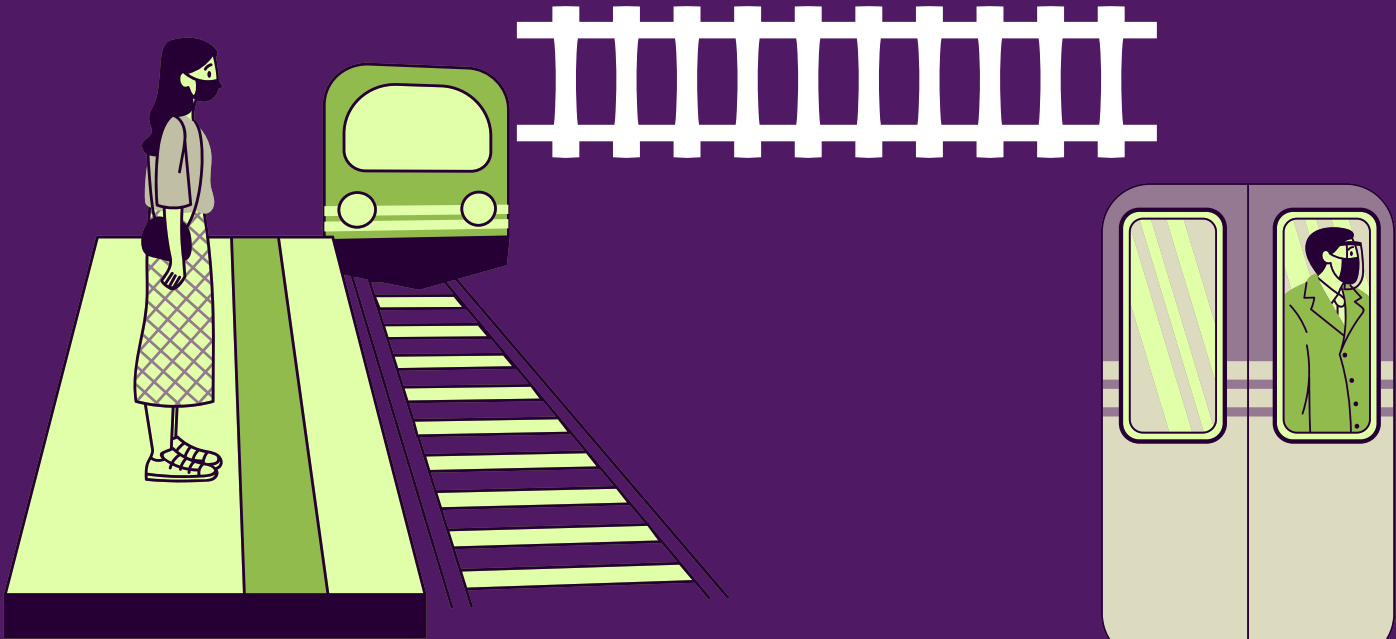
THE GEOGRAPHY OF TRANSPORT SYSTEMS

THE MOBILITY OF PASSENGERS AND FREIGHT IS
FUNDAMENTAL TO ECONOMIC AND SOCIAL ACTIVITIES
SUCH AS COMMUTING, MANUFACTURING,
DISTRIBUTING GOODS, OR SUPPLYING ENERGY



TRANSPORT IN KAZAKHSTAN RAILWAYS

AS THE KAZAKHSTANI RAIL SYSTEM WAS DESIGNED DURING THE SOVIET ERA, RAIL ROUTES WERE DESIGNED IGNORING INTER-SOVIET BORDERS, BASED ON THE NEEDS OF SOVIET PLANNING



EXTRA INFORMATION



KAZAKHSTAN'S DEVELOPED
RAILWAY SYSTEM PROMOTES
INTERNATIONAL AND
REGIONAL TRADE CONNECTING
ASIA AND EUROPE

WOW!





THERE IS A SMALL METRO
SYSTEM IN ALMATY, THE
FORMER CAPITAL AND THE
LARGEST CITY IN THE COUNTRY





DO YOU HAVE ARE QUESTION???

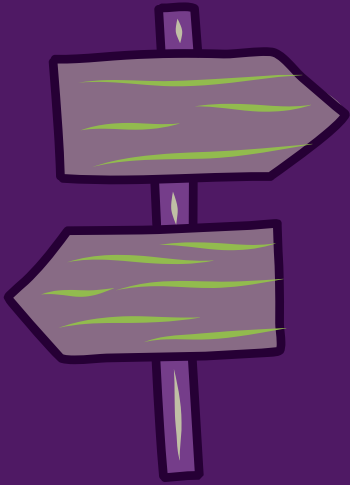


TODAY WE KNOW A LOT OF INFORMATION ABOUT TRANSPORT!
LETS CONTINUE!

WE SHOULD FIND OUT EVERYTHING!

WOW!!!!!!!!!!





I HAVE SOME QUESTIONS ABOUT CAR!

ARE YOU READY?





- Why doesn't the sky fall on our heads? ...
- Can cars fly? ...
- Can I get sunburnt through a window? ...
- Who taught the car how to drive? ...
- Do cars have feelings? ...
- Is our car a boy or a girl? ...
- Is our car magic? ...
- What is this for





AIRPORTS

THE LARGE AREA OF THE COUNTRY AND THE ASSOCIATED LONG DISTANCES MAKES AIR TRAVEL A VERY IMPORTANT COMPONENT IN DOMESTIC TRAVEL.

AIR ASTANA - AIR ASTANA (Эйр Астана) IS THE PRINCIPAL AIRLINE AND THE
FLAG CARRIER OF THE REPUBLIC OF KAZAKHSTAN






Air astana 4-star airline from Kazakhstan Bang...



Air astana



Watch on  YouTube

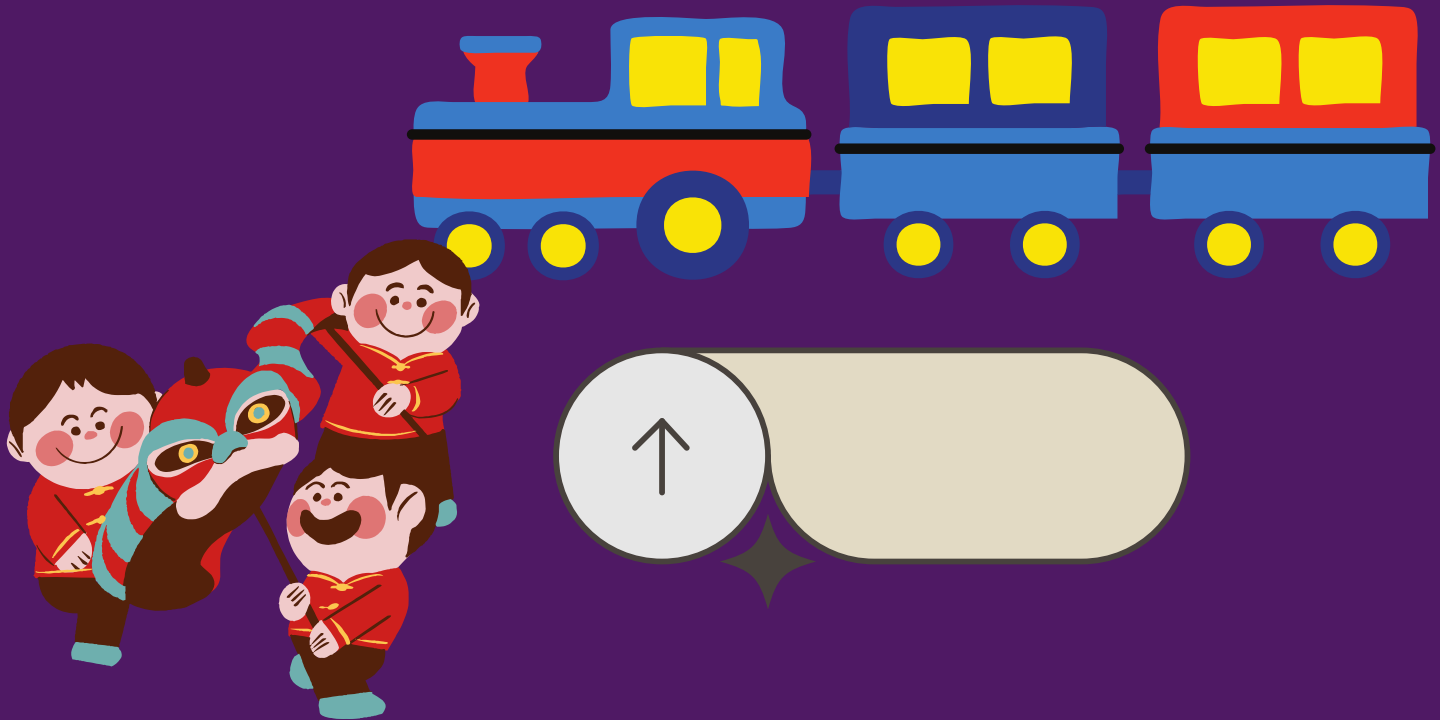
PUBLIC TRANSPORT IN KAZAKHSTAN
METRO

ALMATY IS HOME TO THE COUNTRY'S ONLY METRO SYSTEM, ALTHOUGH ASTANA IS CURRENTLY PLANNING TO IMPLEMENT A LIGHT METRO SYSTEM. T



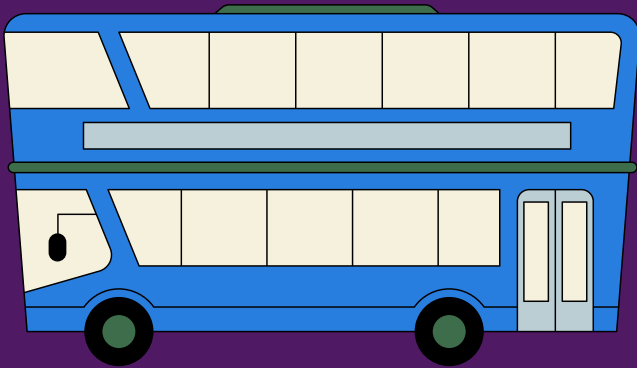
TRAIN

TRAINS CAN BE A SCENIC WAY TO TRAVEL LOCALLY AND REGIONALLY IN KAZAKHSTAN, AND THEY EVEN REACH NEIGHBOURING COUNTRIES SUCH AS RUSSIA, CHINA, KYRGYZSTAN AND UZBEKISTAN, PROVIDED THAT TIME IS NOT AN ISSUE. TRAVELLING BY RAIL MAY BE CHEAP, BUT IT IS ALSO RATHER SLOW.



BUSES

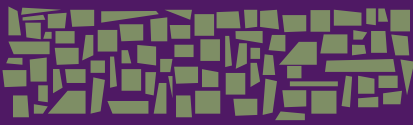
TRAVELLING BY BUS IN KAZAKHSTAN IS A LITTLE FASTER THAN TRAVELLING BY TRAIN, BUT SLOWER THAN COMMUTING BY TAXI OR CAR.



TAXIS IN KAZAKHSTAN

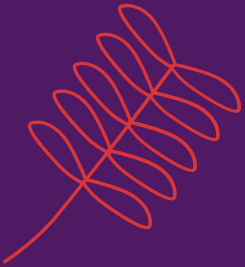
TAXIS ARE USUALLY AVAILABLE OUTSIDE BUS AND TRAIN STATIONS THROUGHOUT KAZAKHSTAN. WHILE MORE EXPENSIVE THAN TRAINS OR BUSES, THEY ARE STILL RELATIVELY CHEAP, AND THE COST CAN BE FURTHER REDUCED BY SHARING A RIDE WITH OTHER PASSENGERS





CYCLING IN KAZAKHSTAN

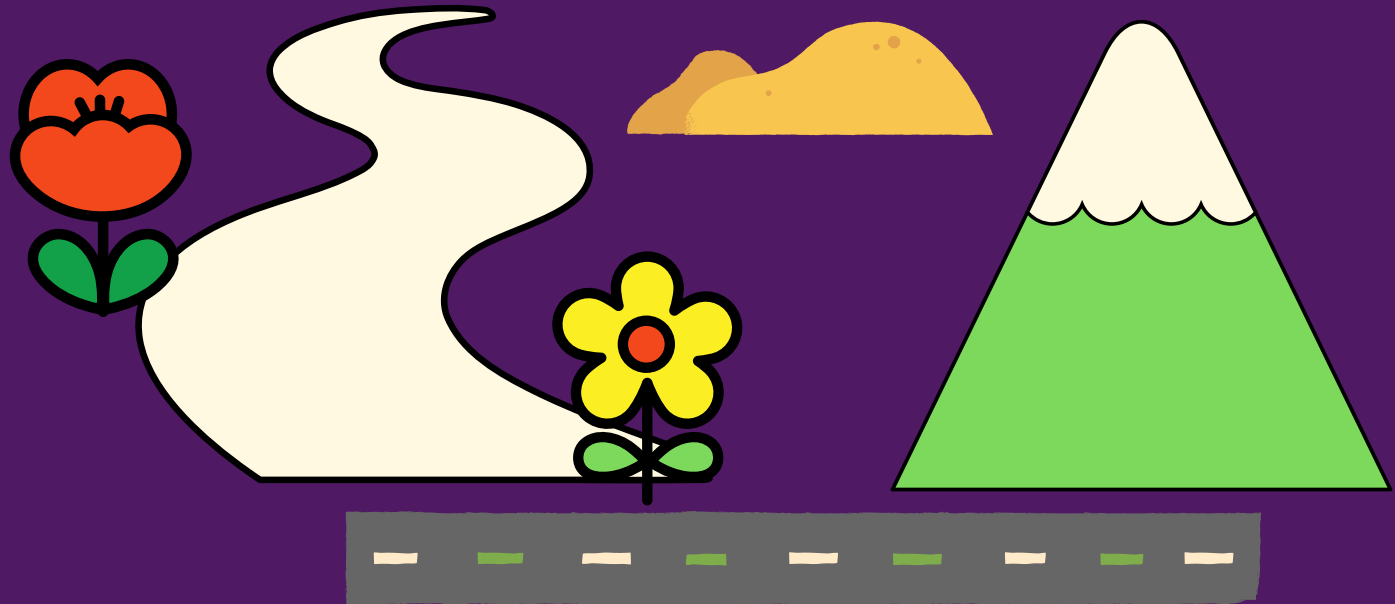
THERE IS LITTLE TO NO CYCLING INFRASTRUCTURE IN KAZAKHSTAN, ALTHOUGH THAT DOESN'T STOP A FEW ENTHUSIASTIC LOCALS FROM DUSTING OFF THEIR BIKES EVERY YEAR AND TAKING A FEW RIDES IN THE SUMMER



ROAD TRANSPORT IN KAZAKHSTAN

IT IS EXTREMELY IMPORTANT TO CREATE MODERN TRANSPORT
INFRASTRUCTURE IN KAZAKHSTAN.

WITH THE EXPANSION OF INTERSTATE ECONOMIC RELATIONS, TRADE
FLOWS BETWEEN COUNTRIES





**THE HIGH LEVEL OF TRANSPORT COSTS THAT LANDLOCKED COUNTRIES
HAVE TO BEAR HINDERS THE
DEVELOPMENT OF EXPORTS**



WATER TRANSPORT IN KAZAKHSTAN IS COMPOSED OF MARITIME AND INLAND WATER (RIVER) TRANSPORT. THE EFFICIENCY OF USING WATER TRANSPORT DEPENDS LARGELY ON THE AVAILABILITY OF CARGOES AND COORDINATION WITH OTHER MODES OF TRANSPORT.



SHIPPING IN KAZAKHSTAN IS POSSIBLE ON RIVERS SUCH AS THE
IRTYSH, SYRDARYA, URAL, ILI AND
ISHIM.






Kazakhstan and Russia Increase Volume of...



REGIONAL
FOCUS

Watch on  YouTube



SEA TRANSPORT

ON THE CASPIAN COAST OF KAZAKHSTAN THERE ARE THREE MAJOR SEAPORTS - AKTAU, BAUTINO AND KURYK.



THE PORT OF AKTAU IS THE ONLY ICE-FREE SEA PORT ON INTERNATIONAL ROUTES. IT INCLUDES A FERRY COMPLEX, TANKER BERTHS, A GRAIN TERMINAL, A CARGO TERMINAL, LOADING AND UNLOADING AND LOADING IN THE BAUTINO AREA.



THE PORT OF AKTAU IS THE ONLY ICE-FREE SEA PORT ON INTERNATIONAL ROUTES.



ALMATY METRO (KAZAKH: Алматы метрополитені, ALMATY METROPOLITENI; RUSSIAN: АЛМАТИНСКИЙ метрополитен) IS A RAPID TRANSIT/METRO SYSTEM IN ALMATY, KAZAKHSTAN.





**CONSTRUCTION OF THE ALMATY
METRO BEGAN ON 7 SEPTEMBER 1988.
WHEN KAZAKHSTAN WAS PART OF THE
SOVIET UNION. COST LED TO THE
ACCUMULATION OF LARGE DEBTS TO
CONSTRUCTION WORKERS**



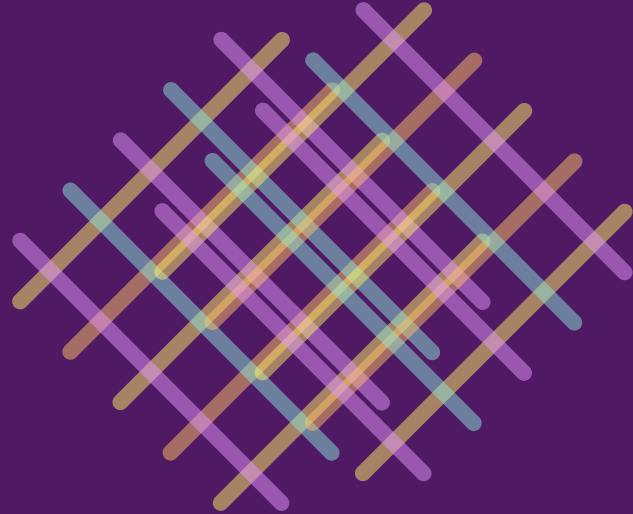
INTERESTING THING ARE AHEAD OF US



Happy

FARE

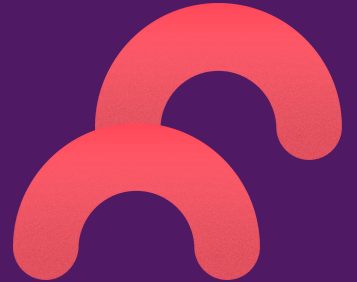
THE FARE IS PAID USING CONTACTLESS REUSABLE
SMART CARDS AND DISPOSABLE SMART TOKENS



BEST PUBLIC TRANSPORTATION SYSTEMS IN THE WORLD

PUBLIC TRANSPORTATION ISN'T ALWAYS A HEADACHE.

ONE OF THE MOST WELL-KNOWN PUBLIC
TRANSPORTATION SYSTEMS IN THE WORLD IS THE
LONDON UNDERGROUND




YEAAAH, IT IS REALLY INTERESTING!!!!



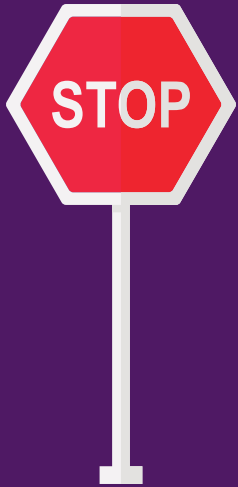
The Power of Transportation | Origins: The ...



Watch on  YouTube



LET'S PRACTICE



!!!!



LET'S DO IT
AS MUCH
AS WE CAN



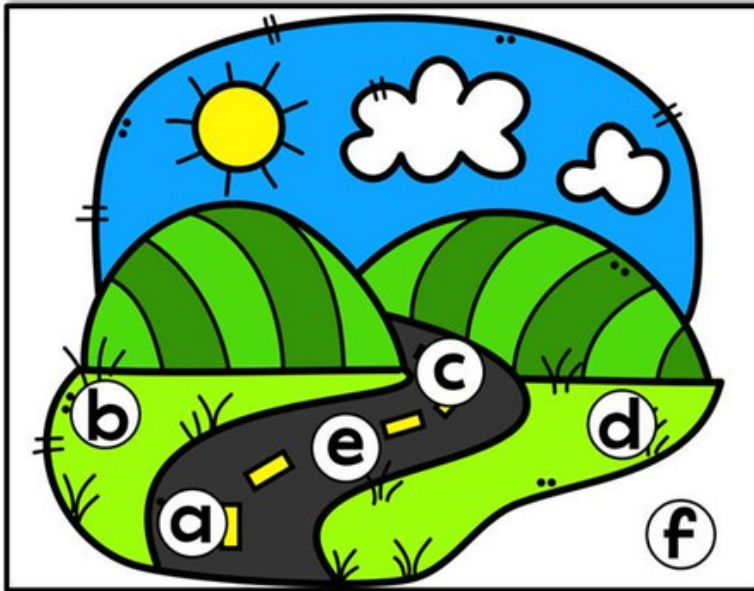
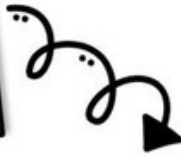
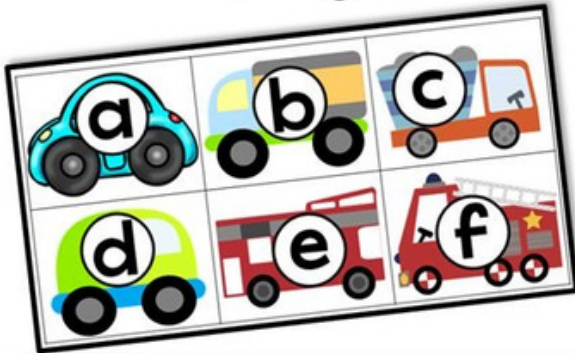
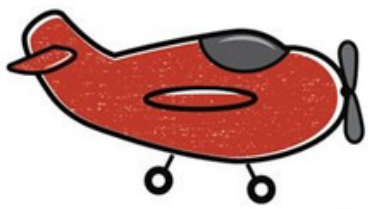
Cardboard Tube Cars

simple craft to go with the movie



WHICH
TRANSPORTATION
VEHICLES TRAVEL
BY WATER, AIR, OR
LAND? DRAW LINES
TO MATCH.





WOW!

PUT THE LETTERS IN THE
RIGHT PLACE

WOW!



Airplane



Ambulance



Bicycle



Bus



Car



Fire Truck

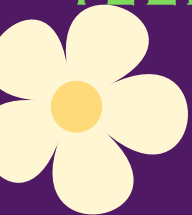
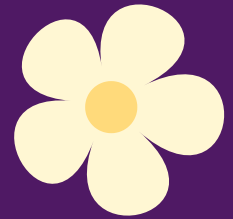


Helicopter



Hot Air Balloon

CHOOSE ONE TRANSPORT AND
TELL YOUR OPINION ABOUT IT



Thank you

IF YOU HAVE A QUESTION , DON'T BE SHY !

I'M ALWAYS READY TO ANSWER



 How to contact me?



877763093875



ARUJAN581



NADOMTEH083@GMAIL.COM

